

## MAP SYMBOLS

- BLUFF AIRPORT
- BLUFF GREAT HOUSE
- CEDAR HALL  
*DesignBuildBLUFF*
- CEMETERY
- CITY PARK
- COMMUNITY CENTER
- EV CHARGING STATIONS
- LIBRARY
- POST OFFICE

## BLUFF BUSINESS KEY

### DINING

- 1 CANYON SMOKEHOUSE
- 2 CEDAR SHACK  
AT BLUFF DWELLINGS RESORT
- 3 COMB RIDGE EAT AND DRINK
- 4 DAIRY CAFÉ
- 5 DUKE'S  
AT DESERT ROSE RESORT & CABINS
- 6 PICADILLY PIZZA  
AT K&C GAS/CONVENIENCE
- 7 TWIN ROCKS CAFÉ

### SHOPPING

- 1 AMIRA'S BOUTIQUE  
AT DESERT ROSE RESORT & CABINS
- 2 BEARS EARS EDUCATION CENTER
- 3 BLUFF ART & CURIOSITY SHOPPE
- 4 BLUFF DWELLINGS RESORT
- 5 CLOUDWATCHER STUDIO  
BY APPOINTMENT ONLY
- 6 CO-OP & VISITOR CENTER  
AT BLUFF FORT
- 7 COMB RIDGE EAT AND DRINK
- 8 COW CANYON  
TRADING POST & GALLERY
- 9 DAIRY CAFÉ  
AT COTTONWOOD RV PARK
- 10 K & C GAS/CONVENIENCE
- 11 TWIN ROCKS TRADING POST
- 12 TWIN ROCKS CAFÉ
- 13 WILD EXPEDITIONS
- 14 YANITO BAAHOZHO GALLERY

### LODGING

- 1 ADAMS HOUSE
- 2 BLUFF DWELLINGS RESORT
- 3 BLUFF GARDENS CABINS
- 4 CADILLAC RANCH RV PARK
- 5 CANYON WREN  
BED & BREAKFAST
- 6 CORAL SANDS RV PARK
- 7 COTTONWOOD CABINS
- 8 COTTONWOOD RV PARK
- 9 DESERT ROSE  
RESORT & CABINS
- 10 KOKOPELLI INN
- 11 LA POSADA PINTADA
- 12 MOKEE MOTEL
- 13 RECAPTURE LODGE
- 14 WILLOW STREET  
COTTAGES & STUDIOS

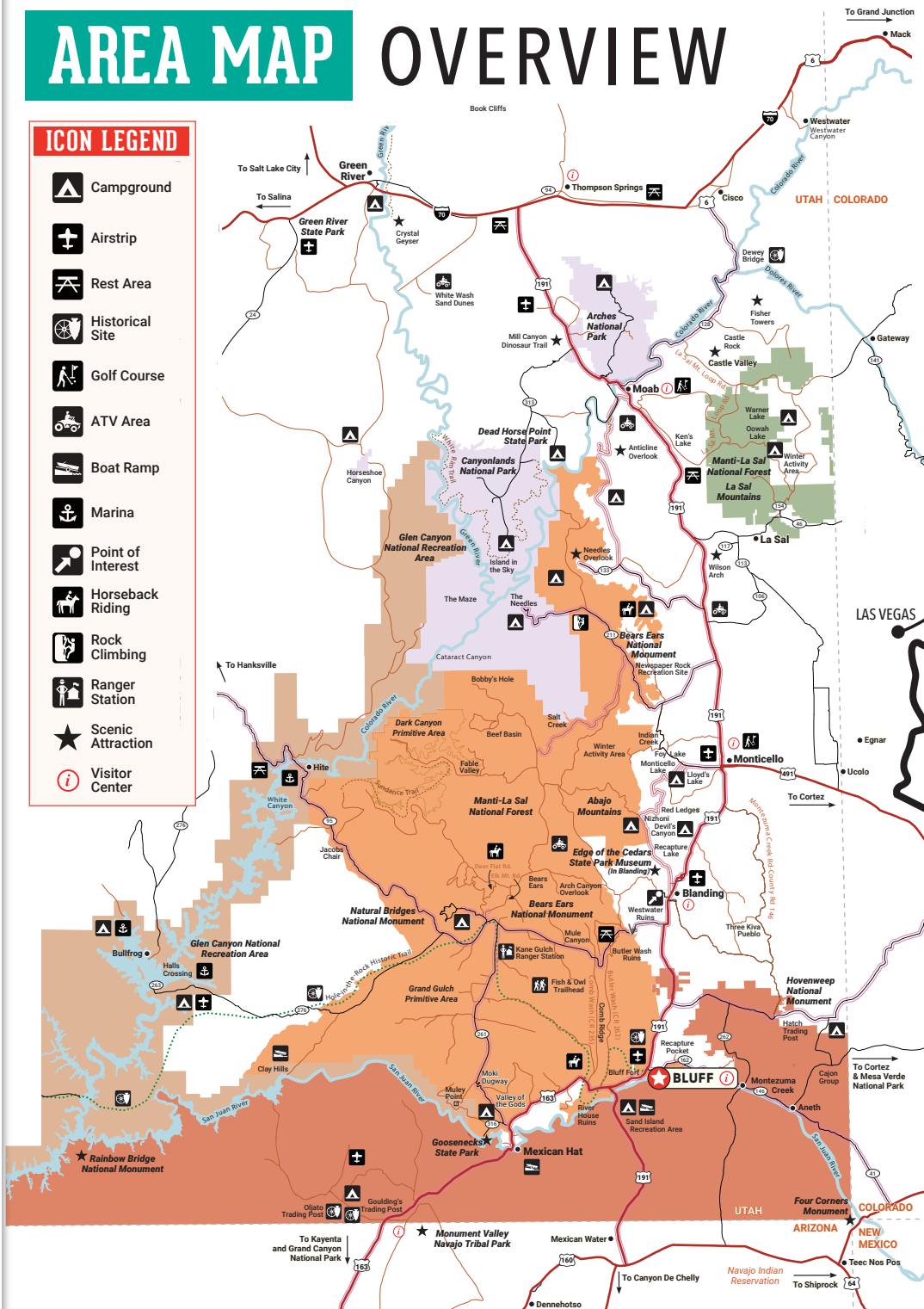
### GUIDES

- 1 DESERT ROSE TOURS  
AT DESERT ROSE RESORT & CABINS
- 2 TSÉ KOOH OUTFITTERS
- 3 WILD EXPEDITIONS

# AREA MAP OVERVIEW

## ICON LEGEND

- Campground
- Airstrip
- Rest Area
- Historical Site
- Golf Course
- ATV Area
- Boat Ramp
- Marina
- Point of Interest
- Horseback Riding
- Rock Climbing
- Ranger Station
- Scenic Attraction
- Visitor Center



## MAP LEGEND

### ROADS

- Scenic Byway or Backway
- Primitive Roads  
*High Clearance Recommended*
- Passenger Vehicle
- Highway
- Hole-in-the-Rock Historic Trail
- Hiking / Biking Trail

### LAND DESIGNATION

- National Park
- National Monument
- National Forest
- National Recreation Area
- Navajo Reservation
- Primitive/Wilderness Area

## REGIONAL MAP



## GETTING AROUND IN CANYON COUNTRY

Most areas and sites are on paved roads, some accessed via graded gravel, and a few require 4-wheel drive. Most are within a short drive from our communities.

Those areas accessed by 4-wheel drive may require long days or overnight stays. Prepare for a wilderness experience. It is not recommended that you travel to remote sites alone or with only one vehicle. When wet, some roads are impassable even for a 4-wheel vehicle. Check weather and road conditions prior to a trip into the backcountry.

## HOURS FROM:

### FROM THE NORTH & EAST

FROM	TO	TIME (HR/MIN)
Salt Lake City, UT	Monticello, UT	5H
Denver, CO	Monticello, UT	6H
Grand Junction, CO	Monticello, UT	2H 30M
Moab, UT	Monticello, UT	1H
Durango, CO	Monticello, UT	2H
Monticello, UT	Blanding, UT	20M
Blanding, UT	Bluff, UT	30M
Bluff, UT	Mexican Hat, UT	30M
Mexican Hat, UT	Monument Valley	20M

### FROM THE SOUTH

FROM	TO	TIME (HR/MIN)
Page, AZ	Monument Valley	2H
Phoenix, AZ	Monument Valley	4H47M
Las Vegas, NV	Monument Valley	6H
Los Angeles, CA	Monument Valley	9H24M

### WITHIN UTAH'S CANYON COUNTRY

FROM	TO	TIME (HR/MIN)
Monticello	Canyonland Ntl. Park & Needles	1H
Monticello	Bears Ears Ntl. Monument	30M
Blanding	Lake Powell (Halls Crossing)	1H 30M
Blanding	Natural Bridges Ntl. Monument	50M
Blanding	Bears Ears Ntl. Monument	10M
Bluff	Bears Ears Ntl. Monument	5M
Bluff	Hovenweep Ntl. Monument	1H
Bluff	Gooseheads State Park	30M
Bluff	Valley of the Gods	20M
Bluff	San Juan River (Sand Island)	5M
Bluff	Four Corners Monument	1H

## THE NUMBERS...

- 4**  
National Monuments
- 2**  
National Parks & Recreation Areas
- 1**  
National Forest
- 2**  
State Parks
- 2**  
Navajo Tribal Parks & Monuments
- 2**  
Rivers